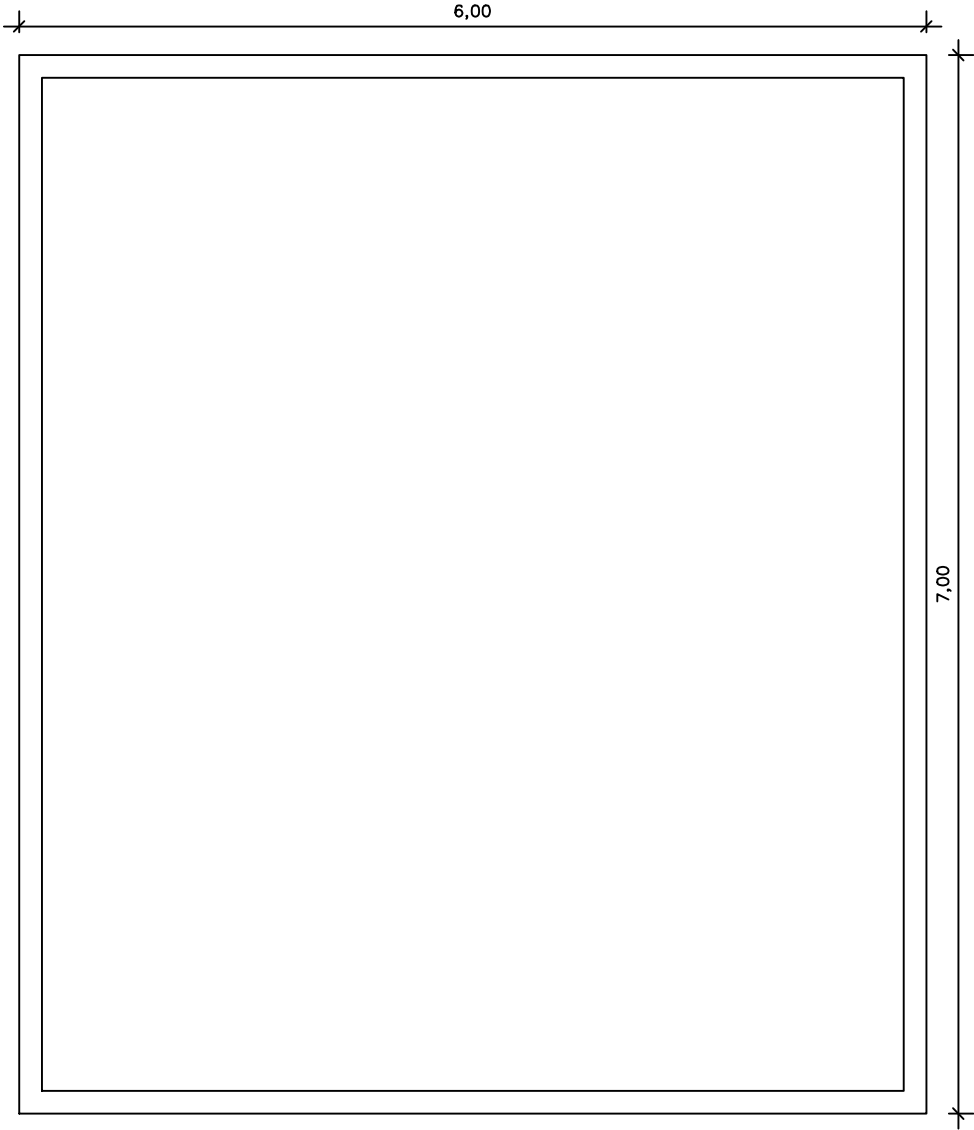
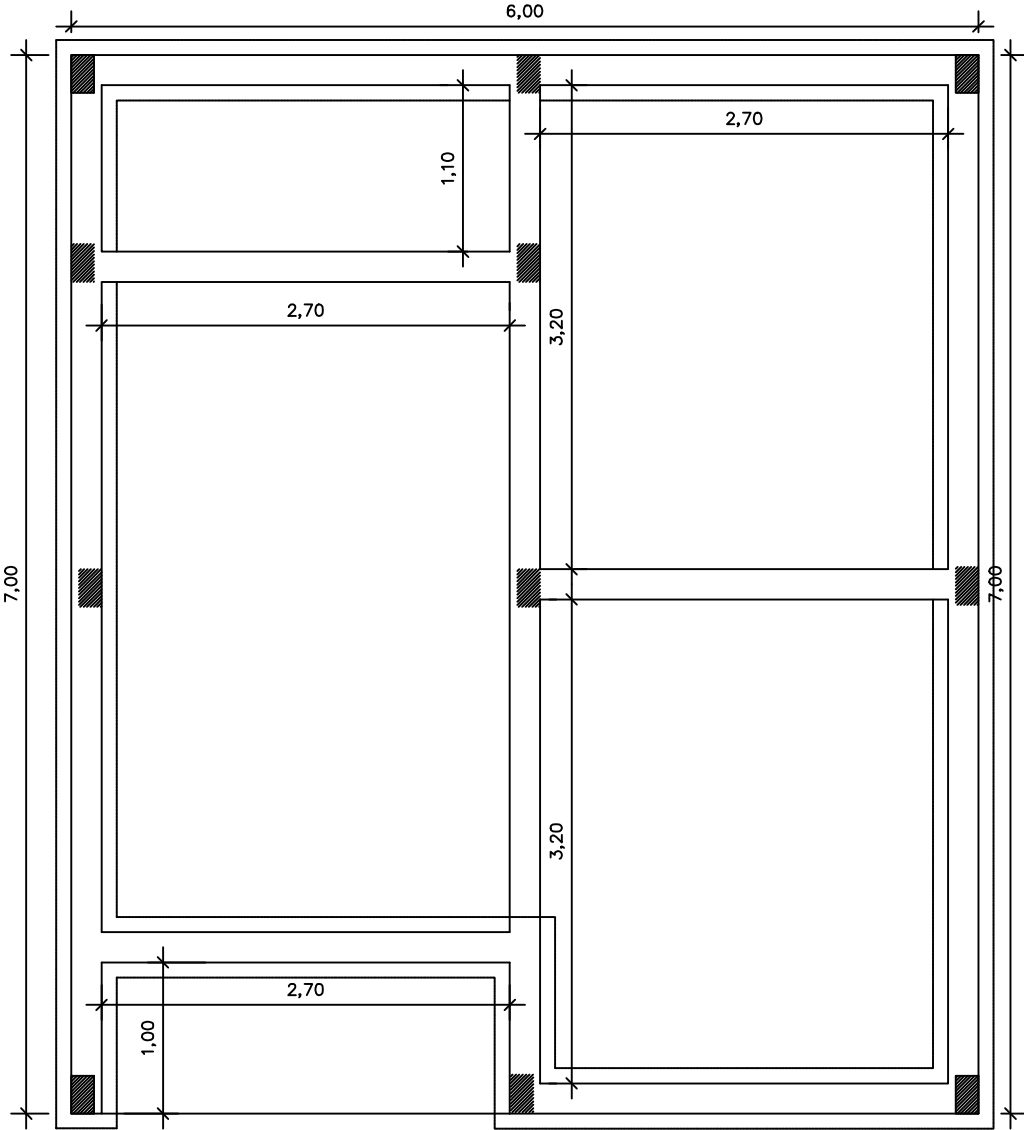
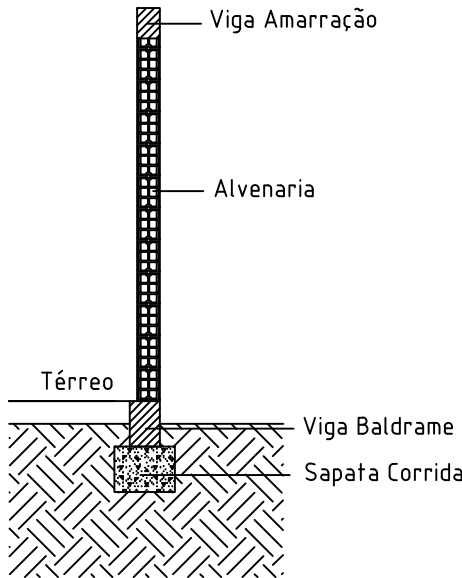


Sapatas, Vigas Baldrame e Pilares

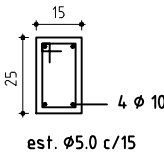
Vigas de Amarração

CORTE ESQUEMÁTICO:

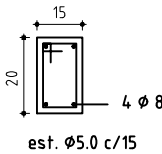


PROJETO ESTRUTURAL

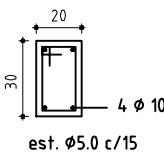
Pilares



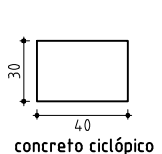
Vigas de Amarração



Vigas Baldrame



Sapata Corrida



Sem Esc.



PROJETO RESIDENCIAL HABITACIONAL

PROJETO: PROJETO ESTRUTURAL

RESPONSÁVEL TÉCNICO: Natan R F Vieira CREA RS236178

PROPRIETÁRIO: Município de Cacique Doble/RS

DATA: 01/07/2024

ESCALA GRÁFICA: INDICADA

PRANCHA: 8/10